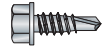
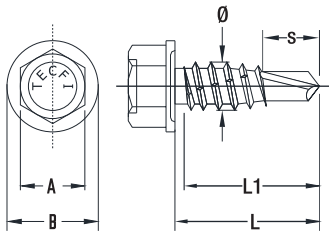


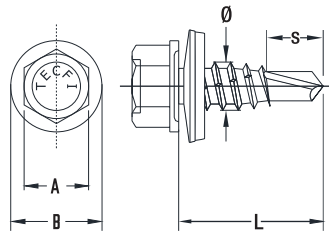
**AB 06 - B6C 01** Vite Testa Esagonale con falsa Rondella autoperforante con punta ridotta, zincata



SCHEDA TECNICA



**AB 06**



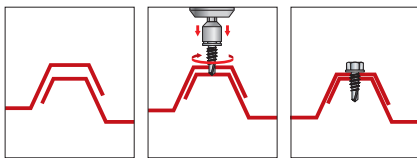
**B6C 01**

$\emptyset$	Diametro esterno della vite
L	Lunghezza totale della vite
s	Lunghezza della punta
L1	Lunghezza della parte filettata + la punta
A	Dimensione della chiave
B	Diametro falsa rondella
$M_t$	Momento di rottura a torsione
$N_k$	Carico caratteristico a rottura per trazione
$V_k$	Carico caratteristico a rottura per taglio
$F_k$	Carico caratteristico ad estrazione su lamiera da 0,7 mm

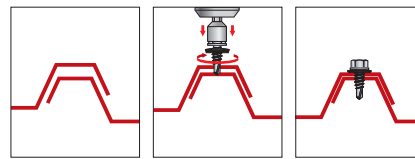
**Informazioni per l'installazione**

Massima capacità di foratura:	1,5 [mm]
Velocità di foratura massima:	1000÷1800 [rpm]
Rivestimento:	Zincata, 5 $\mu$ m (esente CrVI)

Sequenza di installazione AB 06



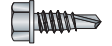
Sequenza di installazione B6C 01



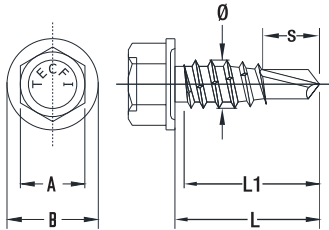
SCHEDA TECNICA **AB 06 - B6C 01**

Codice Articolo	$\emptyset$ (mm)	L (mm)	s (mm)	A (mm)	B (mm)	$M_r$ (Nm)	$N_k$ (kN)	$V_k$ (kN)	$F_k$ (kN)
<b>AB 06 - solo vite</b>									
<b>AB 06 63 022</b>	6,3	22	4,7	10	15	16,9	18	6,4	1,3
<b>B6C 01 - vite assemblata con rondella acciaio prezincato/EPDM (<math>\emptyset</math>6,7 x 19 mm)</b>									
<b>B6C 01 19 022</b>	6,3	22	4,7	10	15	16,9	18	6,4	1,3

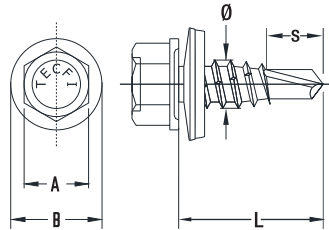
**AB 06 - B6C 01** Hexagonal flat washer head self drilling screw with undercut, hardened, zinc plated



TECHNICAL DATA SHEET



**AB 06**



**B6C 01**

$\emptyset$	Outside screw diameter
L	Overall screw length
s	Bit length
L1	Threaded plus bit length
A	Wrench size
B	Across flat
$M_t$	Breaking torque moment
$N_k$	Characteristic breaking tensile load
$V_k$	Characteristic breaking shear load
$F_k$	Characteristic pull out load in a steel sheet of 0,7 mm

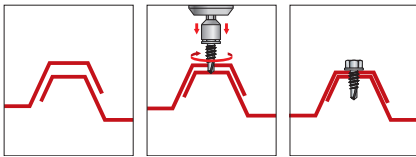
**Installation information**

Maximum drilling capacity: 1,5 [mm]

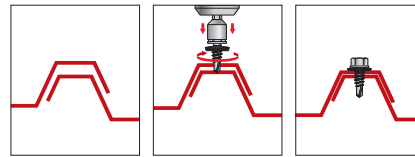
Drilling speed: 1000÷1800 [rpm]

Coating: Zinc plated, 5  $\mu$ m (CrVI free)

AB 06 installation sequence



B6C 01 installation sequence



TECHNICAL DATA OF AB 06 - B6C 01

Item code	$\emptyset$ (mm)	L (mm)	s (mm)	A (mm)	B (mm)	$M_r$ (Nm)	$N_k$ (kN)	$V_k$ (kN)	$F_k$ (kN)
<b>AB 06 - only screw</b>									
AB 06 63 022	6,3	22	4,7	10	15	16,9	18	6,4	1,3
<b>B6C 01 - screw assembled with EPDM Bonded ZP steel washer (<math>\emptyset</math>6,7 x 19 mm)</b>									
B6C 01 19 022	6,3	22	4,7	10	15	16,9	18	6,4	1,3