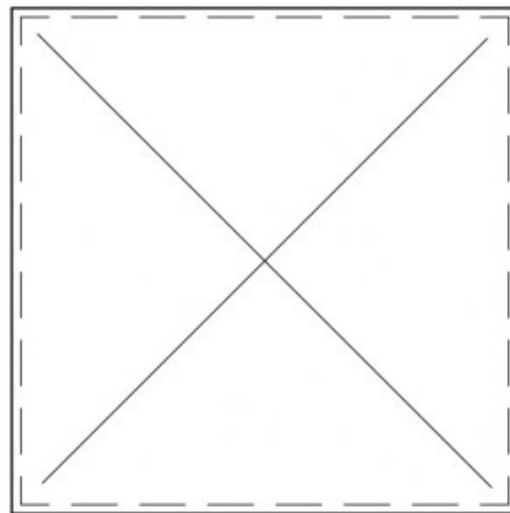
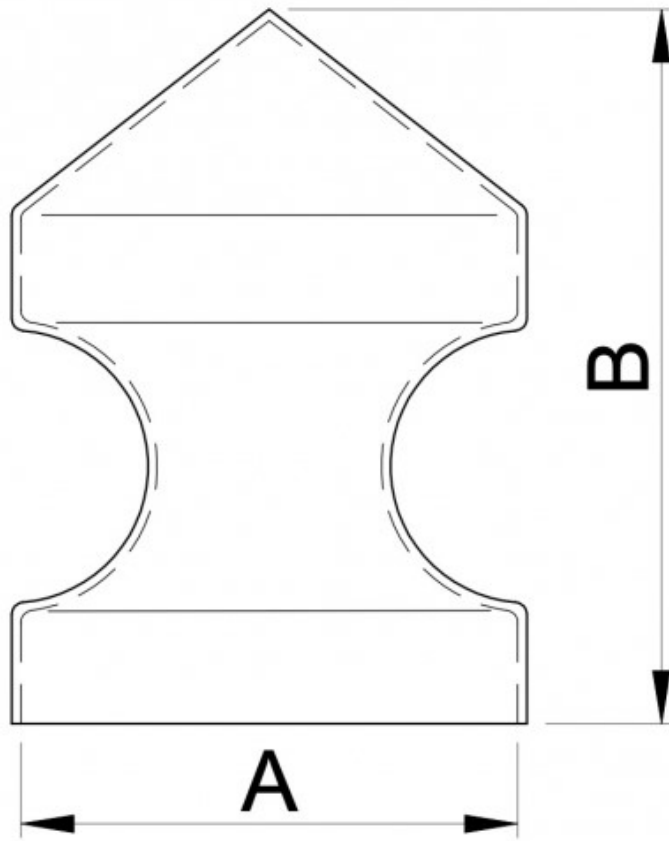




| | | | | | | | |
|---|----|----|-----|-----|-----|-----|-----|
| A | 50 | 60 | 70 | 80 | 100 | 120 | 150 |
| B | 65 | 75 | 100 | 110 | 130 | 150 | 170 |



| | | | |
|---|-----------------|-----------|---|
| ARTICOLO. 00395 | | REV. 0001 |  20832 desio (MB) - Italy Via Lavoratori Autobianchi,1B +39-0362-627078/624502 Fax +39-0362-302692 ibfm@ibfm.it |
| DESCRIZIONE Copricolonna quadrati | | UNITA mm | |
| PERCORSO Disegni/Art.00395/Art.00395.dwg | | SCALA 1:1 |  |
| DISEGNATORE M.C. | DATA 20/01/2017 | | |
| <small> Proprietà esclusiva di I.B.F.M. S.r.l. che si riserva tutti i diritti a termine di legge con divieto d'uso e riproduzione senza l'autorizzazione scritta da parte dell'azienda. I.B.F.M. S.r.l. si riserva il diritto di apportare modifiche senza preavviso e autonomamente. Exclusive property of I.B.F.M. S.r.l. which reserves all rights by law with the prohibition of use and reproduction without the written agreement of the company. I.B.F.M. S.r.l. reserves the right to make changes without any notification and independently. </small> | | | |